



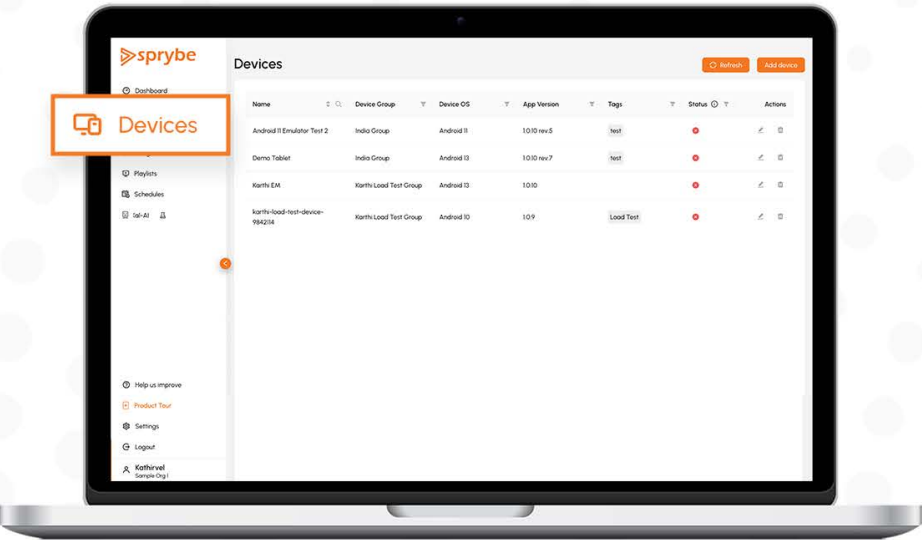
Web Portal User Manual



## **Managing Devices: Creating, Editing, and Deleting**

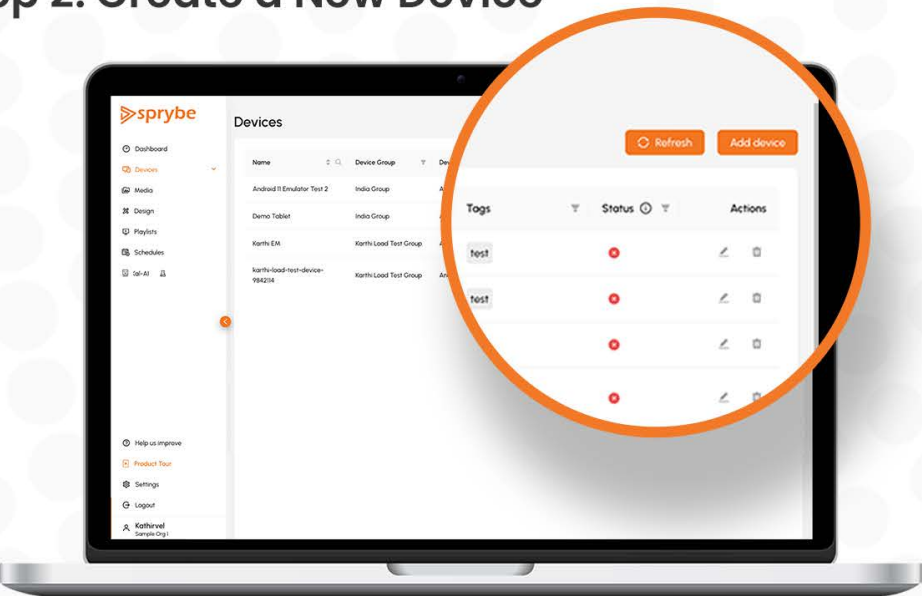
# Managing Devices: Creating, Editing, and Deleting

## Step 1: Access Devices Page



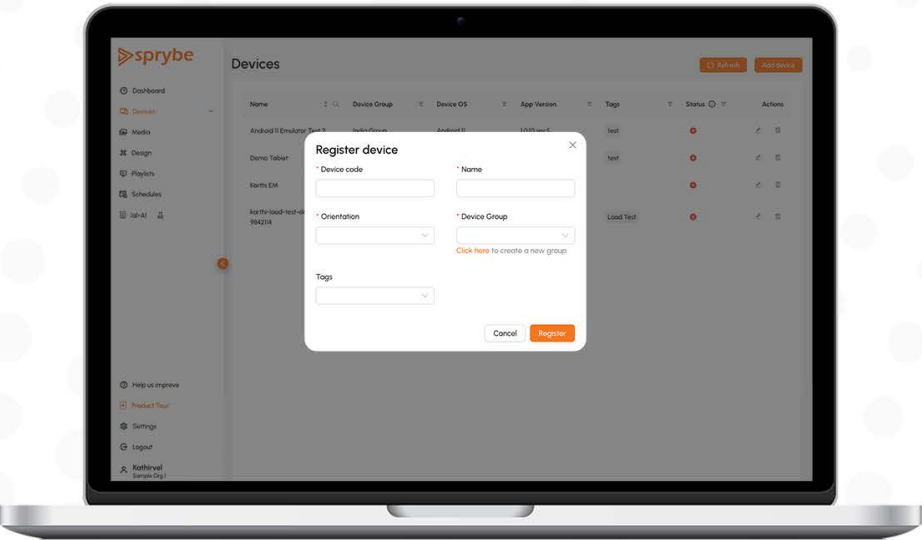
- Navigate to the "Devices" section of Sprybe web portal. Here, you will find a **list of existing devices and options to manage them.**

## Step 2: Create a New Device



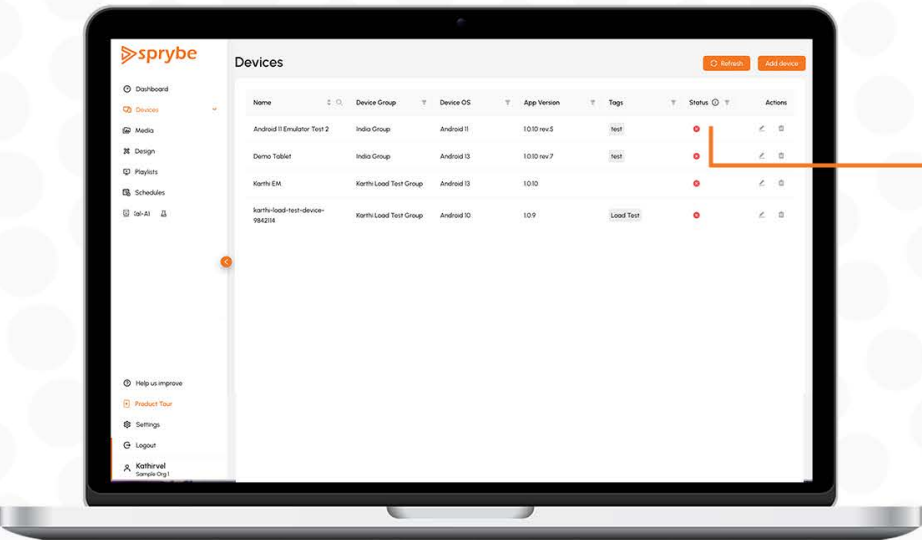
- To create a new device, click on the **"Add Device"** button. This action will open the device creation modal.

## Step 3: Register the Device



- In the device creation modal, fill in the necessary details, including:
  - Device Code: This code is displayed on the device and should be entered accurately.
  - After filling in all required details, click on the "Register" button to add the device to the list.
  - A confirmation message will indicate that the device has been
- After filling in all required details, click on the "Register" button to add the device to the list.
- A confirmation message will indicate that the device has been successfully added. You can now view the new device in the devices list.

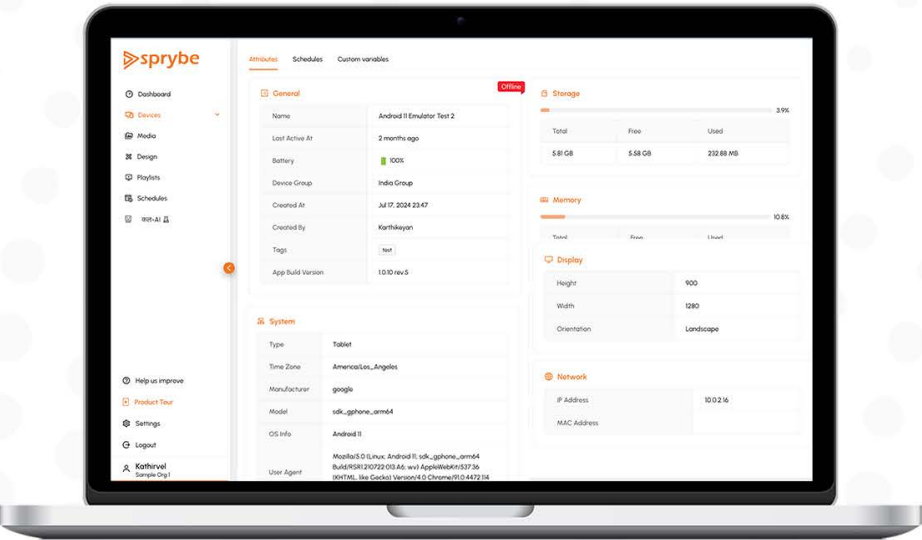
## Step 4: Device row details



- When you click on a device row within the devices list, the system will navigate you to the Device Details page.



## Step 4: Device details



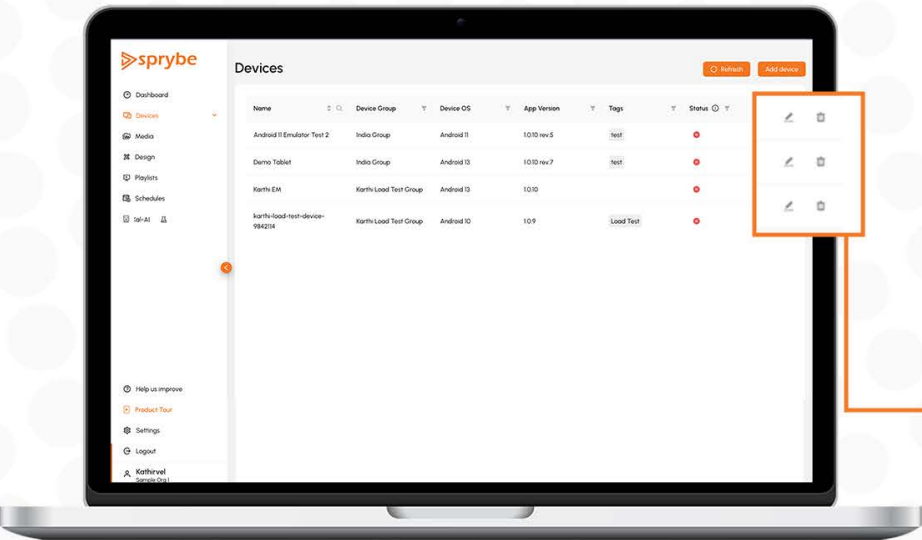
- This page provides comprehensive information about the selected device, allowing you to access various tabs and sections to gain insights into its attributes and schedules.

Attributes

Schedules

Custom variables

## Step 5: Edit or Delete a Device

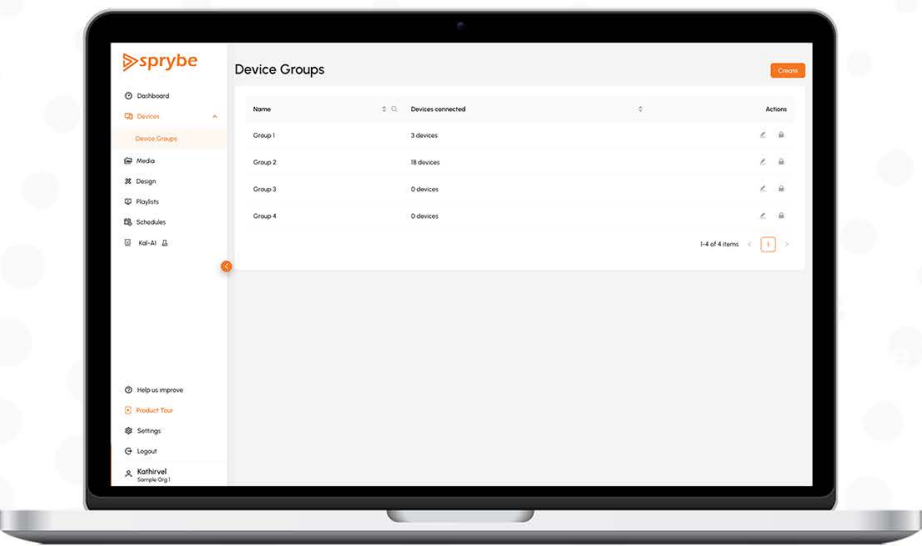


- To edit or delete the device, you need to navigate back to the Devices list page. There, you can perform the necessary actions to modify or remove the device as required.
- Locate the respective options next to each device in the list.
- Click on the "Edit" icon to modify device details in the editing modal.
- Delete: Click on the "Delete" icon to remove the device from the list.

# Managing Device Groups

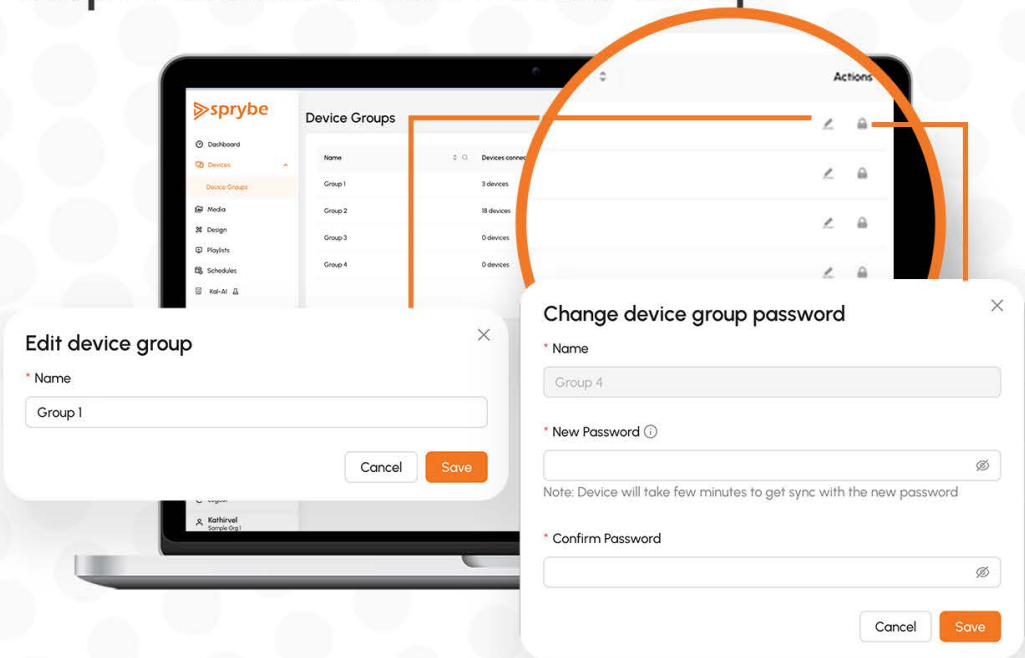
# Managing Device Groups

## Step 1: Accessing Device Groups page



- Navigate to the Device navigation menu, and locate the submenu titled "Device Groups".
- Click on it to access the Device Groups page.
- On the Device Groups page, you'll find a table listing all existing device groups.

## Step 2: Create a New Device Group



- In the device group creation modal, fill in the necessary details Password should be minimum 6 characters and have at least one special character.
- After filling in all required details, click on the "Create" button to add the device to the list.
- A confirmation message will indicate that the device group has been successfully created. You can now view the new device group in the device groups list.